

Smart Data De-Identifier



- Public Sector
- Immersion Day
- AWS Glue Delivery
- Amazon QuickSight Delivery
- Migration Services Competency
- Healthcare Services Competency

Fast, Effective PHI Anonymization

Securing and de-identifying PHI is a critical regulatory need for healthcare organizations while they use and share healthcare information for several needs – such as product development, testing, analytics, regulatory submissions, and data sharing on public platforms,

CitiusTech's Smart Data De-Identifier is a microservice that enables fast, effective PHI anonymization using multiple methodologies, leveraging user-specific configurations and ML-based analytics.

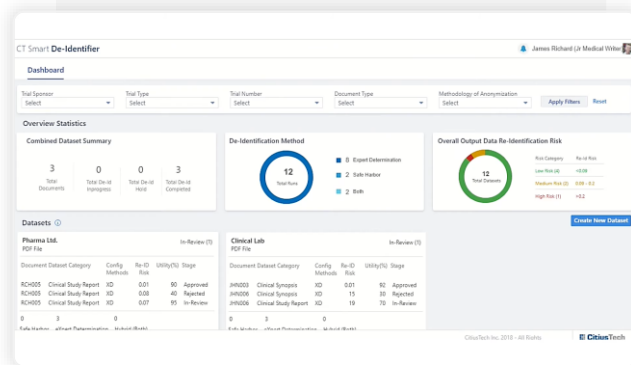
Smart Data De-identifies gives data management and analytics teams the ability to create anonymized PHI- and PII data faster and with fewer errors, giving them the confidence to use and share the data on public forums and across organizations.

Through an extensible architecture, a consultative approach, intelligent detection, and an out-of-the-box solution, healthcare information leaders can leverage anonymized data seamlessly to improve operations, manage risk and utility, and remain compliant with EMA policies in the US, Canada, and Europe.

Smart Data De-Identifier

Microservice that enables fast, effective PHI anonymization

Our solution uses multiple methodologies, leveraging user-specific configurations and ML-based analytics.



Smart Data De-identifier has been used to help payer and provider organizations create and share critical data

Smart Data de-identifier is highly customizable to your specific data sources, data types and anonymization needs.

Here are a few ways in which major healthcare organizations are using Smart Data De-Identifier to create and share data with confidence and in full compliance.

- Integrated service with customer's existing integration engine to de-identify clinical data received from multiple provider sites, and storing the de-identified output in a FHIR format
- Data De-ID service on GCP Cloud with UI-enabled end-to-end workflow for medical writers who process SDTM domain files in XPT, CSV formats, as well as clinical study reports (CSR) in PDF format

Key Highlights

- **Wide input selection:** e.g. CSV, XLS, SAS, XPT, PDF, TXT
- **Reusable:** Across use case and environments
- **Multiple methodologies:** Safe harbor and expert determination
- **Fully configurable:** Suppression rate, privacy criteria, including K-anonymity
- **Effectiveness comparisons:** Expert determination versus safe harbor
- **Advanced insights:** Visualizations across projects and datasets
- **Embedded intelligence:** Automated PHI demarcation and re-identification risk
- **Privacy analytics:** D-Wise, Azure, Google, AWS

About CitiusTech

With 6,500+ healthcare technology professionals worldwide, CitiusTech helps leading healthcare and life sciences organizations reinvent themselves by accelerating digital innovation, leveraging next-gen technologies, and driving data convergence across the healthcare ecosystem. We provide strategic consulting, digital engineering, data, analytics & AI, specialized platforms and end-to-end solutions to over 130 organizations across the payer, provider, medtech and life sciences industries. Our key focus areas include healthcare interoperability data management, quality performance analytics, value-based care, omni channel member experience, connected health, virtual care delivery, real-world data solutions, clinical development, personalized medicine and population health management.

Our cutting-edge technology expertise, deep healthcare domain expertise and a strong focus on digital transformation enables healthcare and life sciences organizations to deliver better outcomes, accelerate growth, drive efficiencies, and ultimately make a meaningful impact to patients.

Princeton | Rochester | Philadelphia | Pittsburgh | Clarksville | Dallas | Boston | Bellevue | Mumbai | Airoli | Bengaluru | Hyderabad | Pune | Gurugram | Chennai |
Ontario | Vancouver | London | Dubai | Singapore